

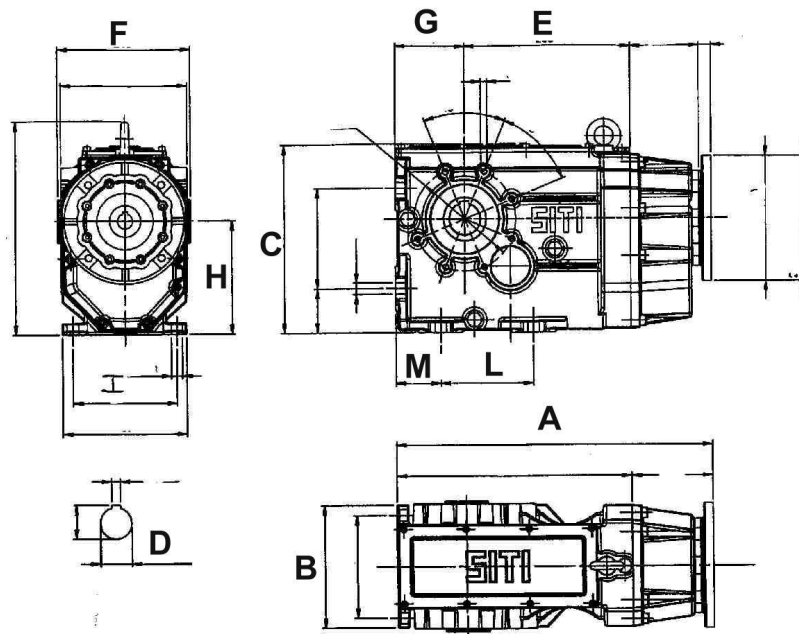
**Equivalentlijst SITI Reductor MBH**

-

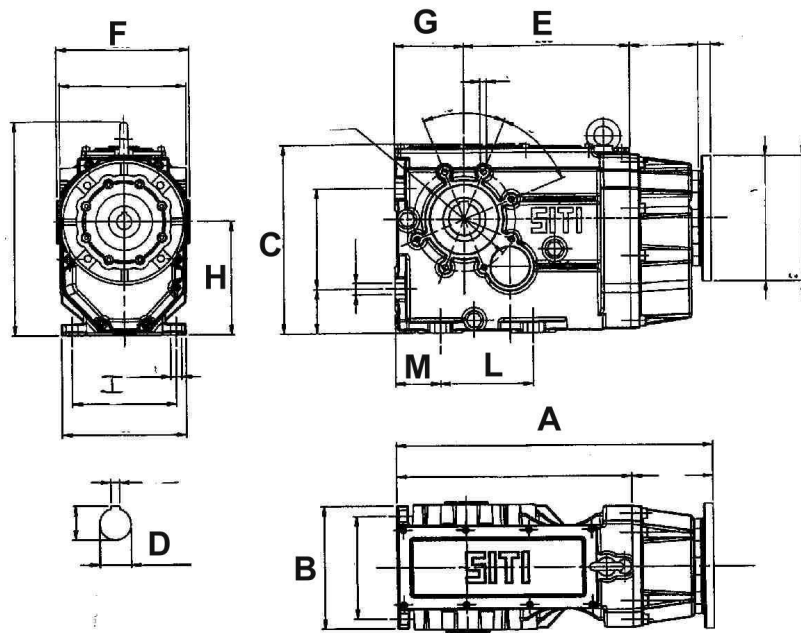
**SITI.nu**

**Tel: 0315 – 230002**

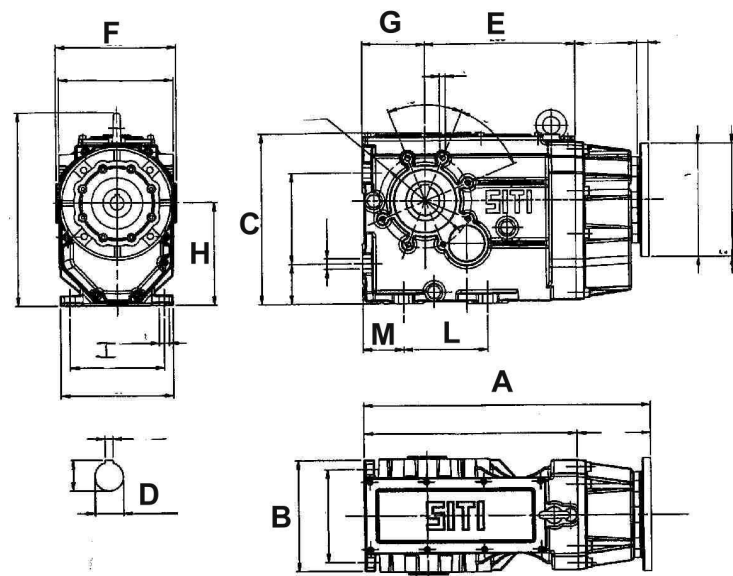
**Bestel op RPWebshop.nl!**



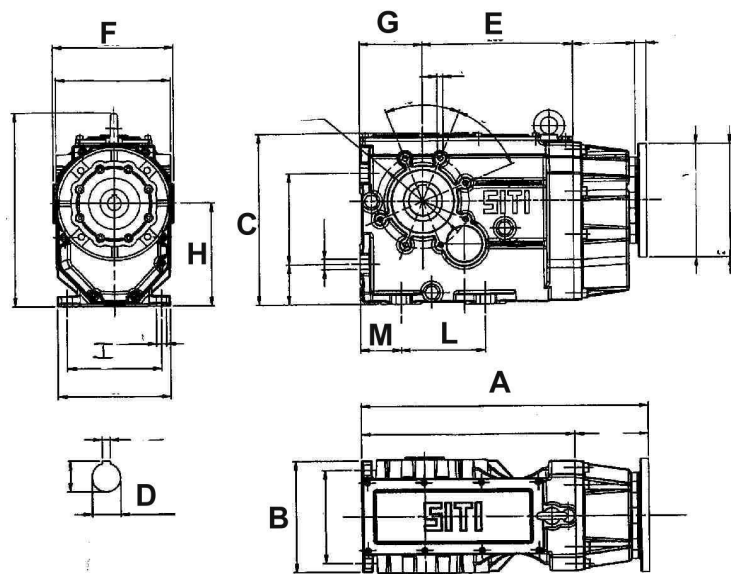
	A	B	C	G	E	F	D	H	I	L	M
	<b>63</b>										
<b>SITI MBH63</b>	402	150	212,5	90	203	140	35	137,5	95	120	30
<b>BONFI A302</b>	333 - P63-71 352,5 - P80-90 362,5 - P100	130	180	90	ND	156	35	108,5	95	126	ND
<b>BONFI A303</b>	390,5 - P63-71 410 - P80-90 420 - P100	130	180	90	ND	156	35	108,5	95	126	ND
<b>MTV A72</b>	307	125	200	90	ND	140	35	ND	95	<b>118</b>	31
<b>MTV A73</b>	380,5	125	200	90	ND	140	35	ND	95	<b>118</b>	31



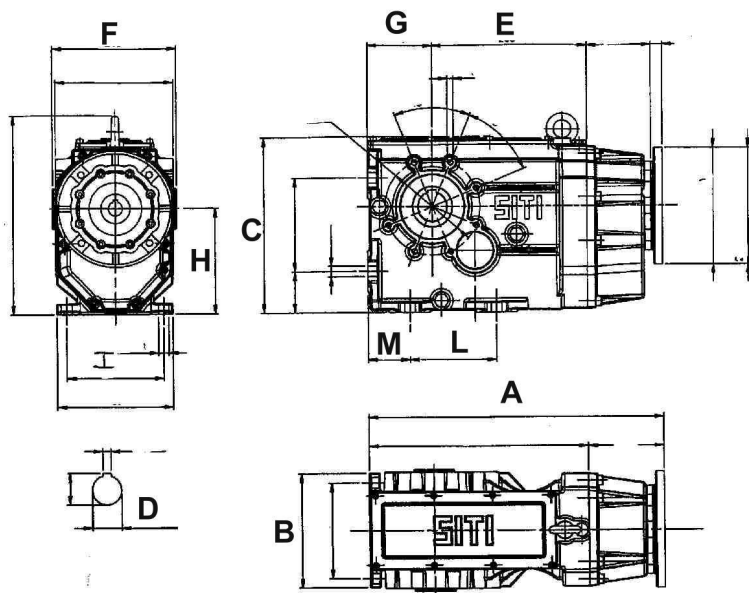
	A	B	C	G	E	F	D	H	I	L	M
	<b>80</b>										
<b>SITI MBH80</b>	413 - P71-80-90 413,5 - P100	166	244	90	214	180	45	140	140	120	60
<b>BONFI A412</b>	375 - P63-71 394,5 - P80-90 404,5 - P100 441 P132	155	224	112	ND	182	40	112	120	160	ND
<b>BONFI A413</b>	436,5 - P63-71 456 - P80-90 466 - P100	155	224	112	ND	182	40	112	120	160	ND
<b>MTV PB83</b>	352 - P80-90 367 - P100 392 - P132	170	225	90	192	180	40	140	140	120	ND



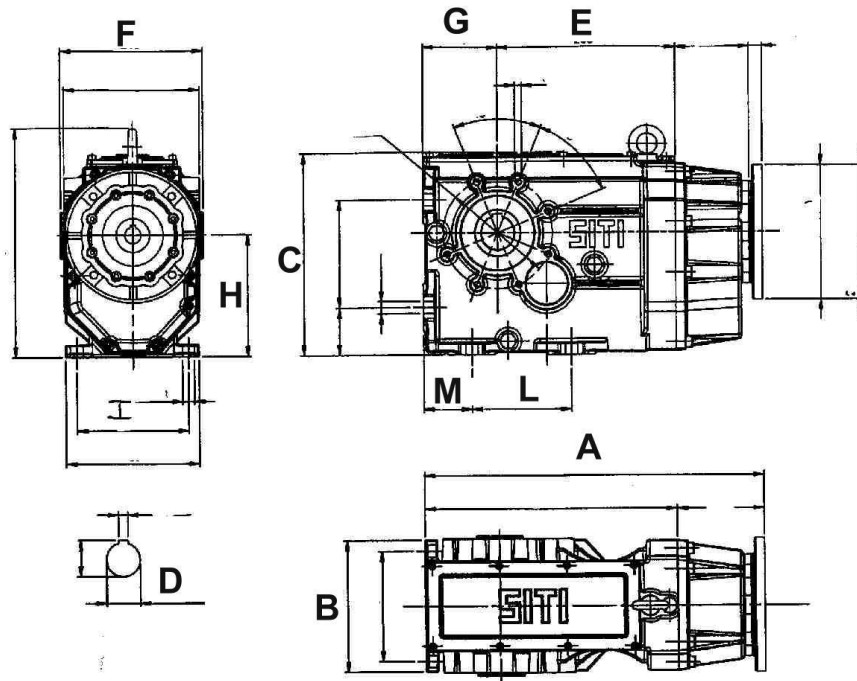
	A	B	C	G	E	F	D	H	I	L	M
	<b>100</b>										
<b>SITI MBH100</b>	508	197	301	112	266	210	50	180	165	150	72
<b>BONFI A502</b>	454,5 - P63-71 474 - P80-90 484 - P100 520,5 - P132 571 - P160-180	185	280	140	ND	219	50	140	150	105	ND
<b>BONFI A503</b>	454,5 - P63-71 474 - P80-90 484 - P100 520,5 - P132 571 - P160-180	185	280	140	ND	219	50	140	150	105	ND
<b>MTV B103</b>	395,5 - P80-90 410,5 - P100 435,5 - P132 483,5 - P160	170	283	112	213,5	210	50	180	165	150	ND



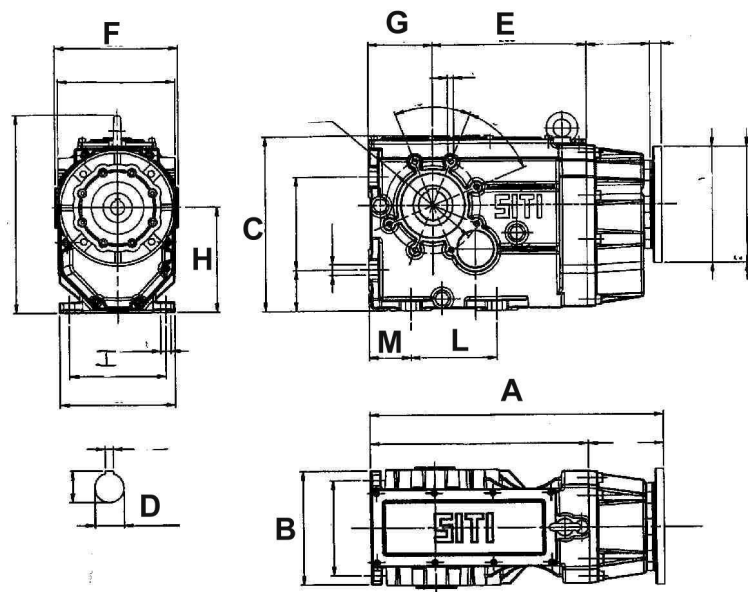
	A	B	C	G	E	F	D	H	I	L	M
	<b>125</b>										
<b>SITI MBH125</b>	563,5	226	356	133	300,5	240	60	213	180	180	78
<b>BONFI A602</b>	536 - P80-90 546 - P100 581,5 - P132 633 - P160-180	235	330	165	ND	242	60	165	195	245	ND
<b>BONFI A603</b>	516,5 - P63-71 536 - P80-90 546 - P100 581,5 - P132 633 - P160-180	235	330	165	ND	242	60	165	195	245	ND
<b>MTV B123</b>	440 - P80-90 455 - P100 480 - P132 527 - P160-180	230	341	132	246	240	60	212	180	180	ND



	A	B	C	G	E	F	D	H	I	L	M
	<b>140</b>										
<b>SITI MBH140</b>	669,5	286	417	160	339,5	300	70	265	240	240	85
<b>BONFI A703</b>	524 - P80-90 534 - P100 570.5 - P132 626 - P160-180 651 - P200	280	384	155	nd	285	70	229	230	294	nd
<b>MTV B143</b>	515 - P100 540 - P132 587 - P160-180 624 - P200	290	414	160	279	300	70	265	240	240	nd

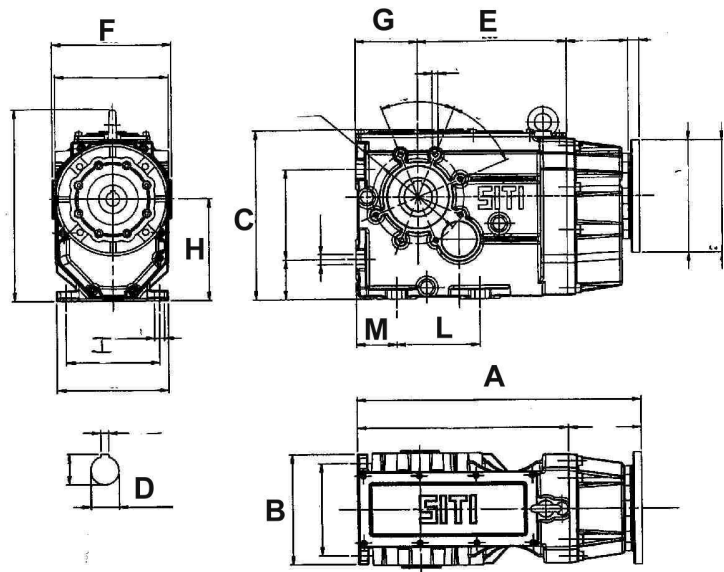


	A	B	C	G	E	F	D	H	I	L	M
	<b>160</b>										
<b>SITI MBH160</b>	765,5	330	491	200	395,5	350	90	301	270	280	105
<b>BONFI A803</b>	602 - P80-90 612 - P100 648,5 - P132 704 - P160-180 729 - P200 774 - P225	330	457	185	ND	340	80	272	275	331	ND
<b>MTV B153</b>	629 - P132 677 - P160-180 714 - P200-225	330	490	200	353	350	90	315	270	280	ND



	A	B	C	G	E	F	D	H	I	L	M
	<b>180</b>										
<b>SITi MBH180</b>	826 - P100-132 955 - P160-180	350	538	230	455	360	100	325	290	200/200	230
<b>BONFI</b>	ND										
<b>MTV</b>	ND										





	A	B	C	G	E	F	D	H	I	L	M
	<b>200</b>										
<b>SITI MBH200</b>	986 - P100- 132 1045 - P160-180	380	603	230	525	400	110	355	320	200/290	90
<b>BONFI A903</b>	723 - P80-90 733 - P100 769,5 - P132 825 - P160- 180 850 - P200 895,5 - P225 925,5 - P250	375	550	225	ND	390	90	325	315	410	ND
<b>MTV</b>	ND										

MERK	GROOTTE	RATIOS	MAX. KOPPEL	HOLLE AS	MAX. MOTORGROOTTE
<b>SITI</b>	<b>MBH 63</b>	<b>7,77 - 188,36</b>	<b>470</b>	<b>30 - 35</b>	<b>112</b>
MOTOVARIO	<b>BA 72-73</b>	8,4 - 68; <b>43,9 - 442,8</b>	420 - <b>450</b>	35 (30)	112
BONFIGLIOLI	<b>A302 A303</b>	5,4 - 97,5; <b>120,5 - 400,8</b>	410 - <b>390</b>	35 (40)	112
ROSSI					
SEW	<b>K47</b>	5,81 - 131,87	400	35	

<b>SITI</b>	<b>MBH 80</b>	<b>7,63 - 193,49</b>	<b>875</b>	<b>35 - 40 - 45</b>	<b>132</b>
MOTOVARIO	<b>BA 83</b>	7,8 - 144,8	850	40 - 45	132
BONFIGLIOLI	<b>A412 A413</b>	5,2 - 79,2; <b>92,8 - 376,8</b>	850	45 (40)	132
ROSSI					
SEW	<b>K67</b>	7,28 - 144,79	820	40	

<b>SITI</b>	<b>MBH 100</b>	<b>7 - 183,67</b>	<b>1800</b>	<b>45 - 50 -55</b>	<b>160</b>
MOTOVARIO	<b>B 103</b>	8,1 - 165,2	1800	50	160
BONFIGLIOLI	<b>A502 A503</b>	7,7 - 20,9; <b>24 - 190,6</b>	800 - <b>1500</b>	50 (55)	160
ROSSI					
SEW	<b>K77</b>	7,24 - 192,18	1550	50	

<b>SITI</b>	<b>MBH 125</b>	<b>6,94 - 226,03</b>	<b>3000</b>	<b>60 - 70</b>	<b>180</b>
MOTOVARIO	<b>B123</b>	8 - 180,4	3500	60	180
BONFIGLIOLI	<b>A602 A603</b>	7,9 - 20,6; <b>25,7 - 185,8</b>	1800 - <b>2800</b>	60 (70)	180
ROSSI	<b>MRC2I 140UO</b>	20,4 - 151	3900	70	<b>132</b>
SEW	<b>K87</b>	7,21 - 197,37	2700	60	

SITI	MBH 140	7,65 - 181,9	5000	70 - 80	200
MOTOVARIO	<b>B143</b>	10,8 - 187,2	5000	70	200
BONFIGLIOLI	<b>A703</b>	9,4 - 153,7	5000	70 (80)	200
ROSSI	<b>MRC2I 160UO</b>	20,6 - 154	6300	80	<b>180</b>
SEW	<b>K97</b>	8,71 - 176,05	4300	70	

SITI	MBH 160	7,56 - 185,8	8000	80 - 90	225 in B3
MOTOVARIO	<b>B153</b>	10,5 - 165,4	8000	90	225
BONFIGLIOLI	<b>A803</b>	9,8 - 156,8	8000	80 (90)	225
ROSSI	<b>MRC2I 180UO</b>	21,4 - 158	8900	90	<b>200</b>
SEW	<b>K107</b>	8,69 - 143,47	8000	90	

SITI	MBH 180	7,96 - 182	11000	100	250 in B3
MOTOVARIO	<b>N.D.</b>	0	0	0	0
BONFIGLIOLI	<b>N.D.</b>	0	0	0	0
ROSSI	<b>MRC2I 200UO</b>	20,5 - 151	12500	100	<b>225</b>
SEW	<b>K127</b>	8,6 - 146	13000	100	

SITI	MBH 200		14000	110	250 in B3
MOTOVARIO	<b>N.D.</b>	0	0	0	0
BONFIGLIOLI	<b>A903</b>	9,7 - 151	14000	90 (100)	250
ROSSI	<b>MRC2I 225UO</b>	19,6 - 156	17000	0	250
SEW	<b>KA127</b>	8,6 - 146	13000	100	<b>280</b>
NORD	<b>SK 9082</b>		12000	100	<b>280</b>

Aan de verstrekte informatie kunnen geen rechten worden ontleend.